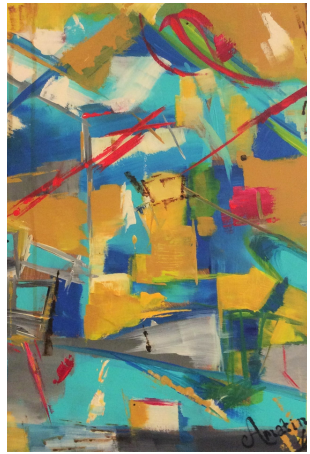




Bus Journey II, Acrylics on Canvas, 127cm x 90cm

MAHLIA AMATINA

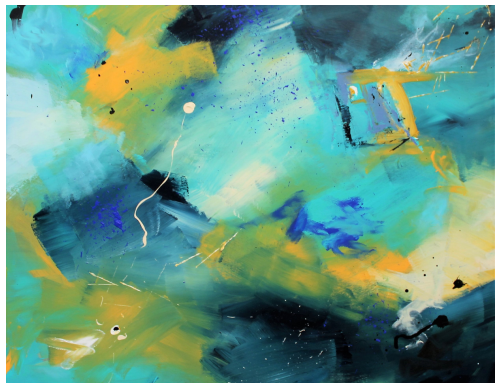
Neurodiverse visual artist inspired by colour
& narrative, creating intensely vibrant
paintings & conceptual art work



Top Box, Clockwise: 'Look! They Also Dry Their Clothes' (51cm x 40cm), *To Elevated Heights* (41cm x 51cm), *A Bridge Between Rainbows* (45cm x 55cm), *The All Seeing Eye* (91cm x 97cm)

Right: 'Understand Your Limitations' (64cm x 54cm)

All paintings are Acrylics on Canvas.





Transitions I and II, Acrylics on Canvas, 60cm x 40cm

KEY SOLO EXHIBITIONS

- *'Different Perceptions'*, Salisbury Arts Centre, 2021
- *'Life on a Spectrum'* (online edition), The Free Space Project (Kentish Town Health Centre), 2020
- *'Life on a Spectrum'* at Arlington Arts Centre (Newbury), South Hill Park (Bracknell), 2019, Riverside Barn Arts Centre (Kingston) and Allen Gallery (Hampshire), 2021 (online)
- *'On a Spectrum - an Exploration of Asperger's Syndrome'* at The Peacock Gallery (Reading), 2017 and Berkshire Hospitals 2017-2019
- *'Around the World in 80 Washing Lines'* at Menier Gallery (London), The Curve (Slough), Riverside Museum (Reading), 2017
- *'Kathmandu Calling!'* at Watlington House and Jelly (Reading), 2015



Bus Journey I, Acrylics on Canvas, 127cm x 90cm

NOTABLE GROUP SHOWS

- *'Different Perspectives'* part of Bloomsbury Festival (online), 2020
- *'Coaction'* at Arts Unbound Gallery (New York), 2019
- *'L'alquimia Femenina'* at Espai-B Galleria (Barcelona), 2018
- *'#Imagine21'* American Airlines Exhibit (USA), 2017
- *'One Square Foot'* at Hermitage Gallery (Amsterdam), 2016

EDUCATION & CONFERENCES

- *National Autistic Society, Professionals Conference*, Panellist for *'Autism, Ethnicity and Culture'* and *'Diagnosis and Identity'*, 2020
- Central St Martin's College: *Abstraction Course* (Enver Gursev), 2020
- Central St Martin's College: *Abstraction Course* (Guy Noble), 2016
- JoeDaisy Studios: *Abstract Art with Acrylics Course* with Caroline Hulse FRSA, 2015
- *BA Psychology and Business (2:1)*, Aston University, 2006

GRANTS/AWARDS

- *ACE DYCP Funding, '18, '21 and Grants for the Arts Funding, '17, '19*
- *Top 50 Influential Neurodiverse Women'* by Women Beyond the Box '19
- Winner of *'Best Education Project'* at Reading Cultural Awards, 2018
- Reading Year of Culture Winner of *'Art in Unusual Places'* Award, 2016

MEDIA

- BBC South Today News, BBC Radio Berkshire, Londonist, and other newspapers, magazines and blog sites.



Collection 'Autismo 25': each piece (25 in total) are approx. 19cm x 27cm (unframed), approx. 21cm x 29cm (framed), **Mixed Media on Paper.**



Artist Bio

Visionary artist Mahlia Amatina invites you into a multi-sensory experience of colour, line, shape, and form through tactile art that explores the creative side of neurodiversity. Drawing inspiration from the varied landscapes and rich flavours of her international roots, Amatina's visual vocabulary creates a narrative through abstraction. Acrylic paint, oil sticks, India ink, and mixed media combine on canvas and paper to push the traditional boundaries of style and purpose.

After being diagnosed with Asperger's Syndrome in 2015, Amatina was inspired to share the unique sensory experiences of life on the autistic spectrum through her art. Working around the theme of neurodiversity, Amatina has transformed her signature style of abstract colourism into a unique, interactive, multi-sensory experience that invites viewers to engage on a level that works for them.

"My vision is colour. My heartbeat is rhyme. My mind expands with bursts of line, shape, and form. And my hands tell my stories."



WWW.MAHLIAAMATINA.COM

